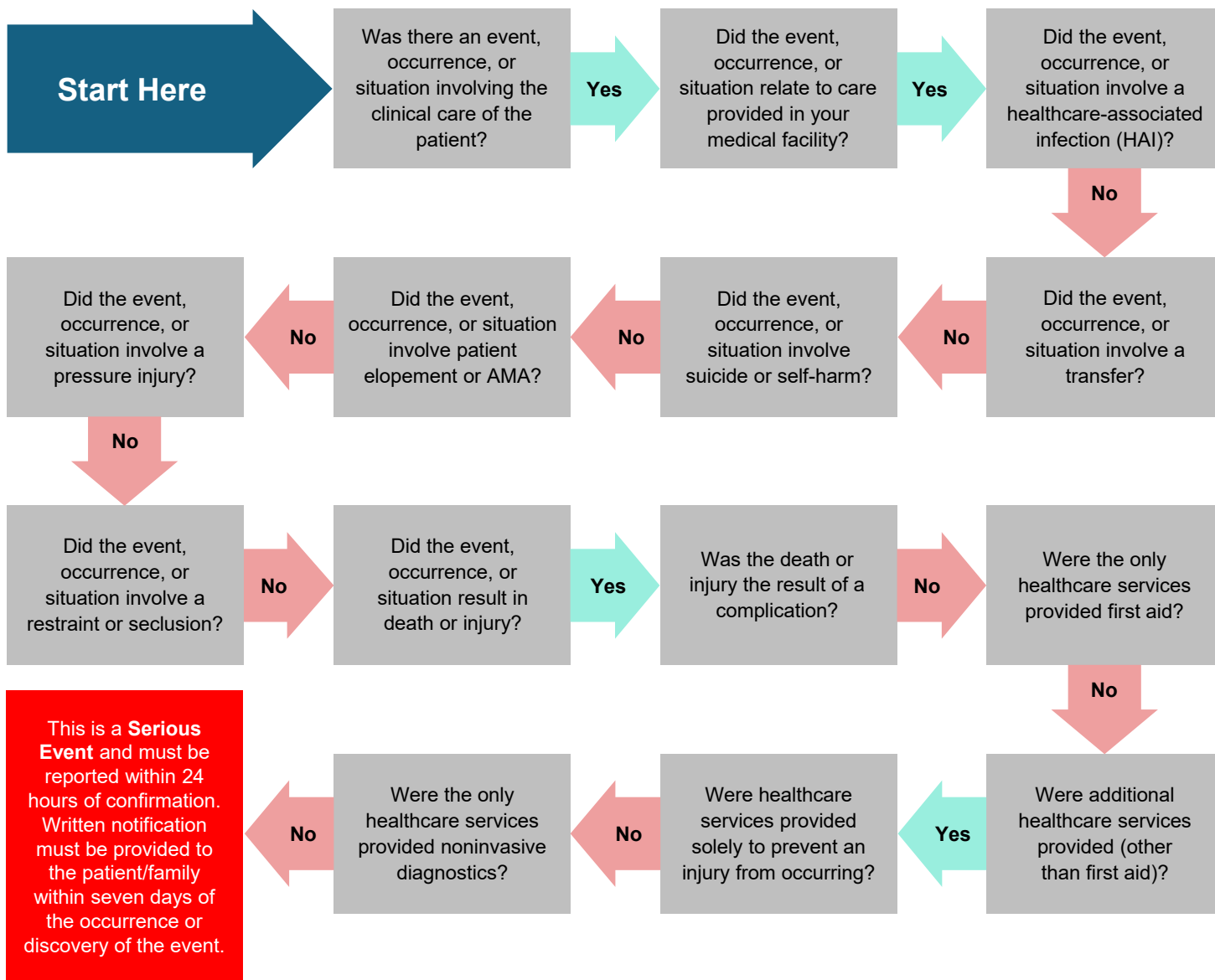


Medication Administration: Insulin vial overdose

Narrative: A patient received an order for 28 units of insulin via vial administration. The RN was unfamiliar with this type of dosing for insulin and thought the entire vial was to be given via a 10 mL syringe. When scanning the vial, the correct units came up (no partial dose indication), and they proceeded to administer the entire vial. The patient developed hypoglycemia and required transfer to the intensive care unit (ICU).



Hypoglycemia, as well as an electrolyte imbalance which developed from an overdose of medication, would be considered the injury in this case. The additional healthcare services included ICU care, comprised of IV medications to stabilize the patient.