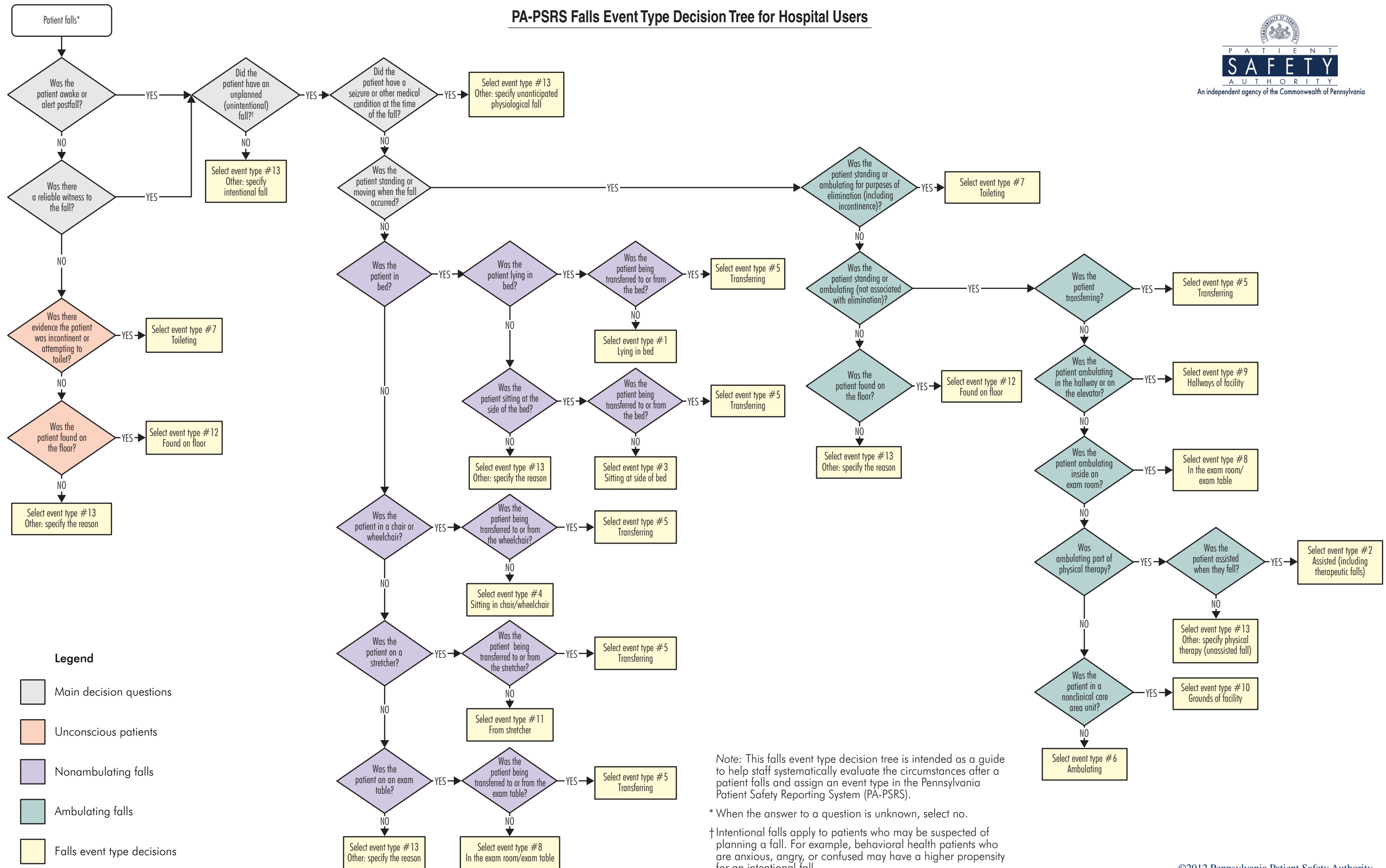


PA-PSRS Falls Event Type Decision Tree for Hospital Users



Note: This falls event type decision tree is intended as a guide to help staff systematically evaluate the circumstances after a patient falls and assign an event type in the Pennsylvania Patient Safety Reporting System (PA-PSRS).

* When the answer to a question is unknown, select no.

† Intentional falls apply to patients who may be suspected of planning a fall. For example, behavioral health patients who are anxious, angry, or confused may have a higher propensity for an intentional fall.