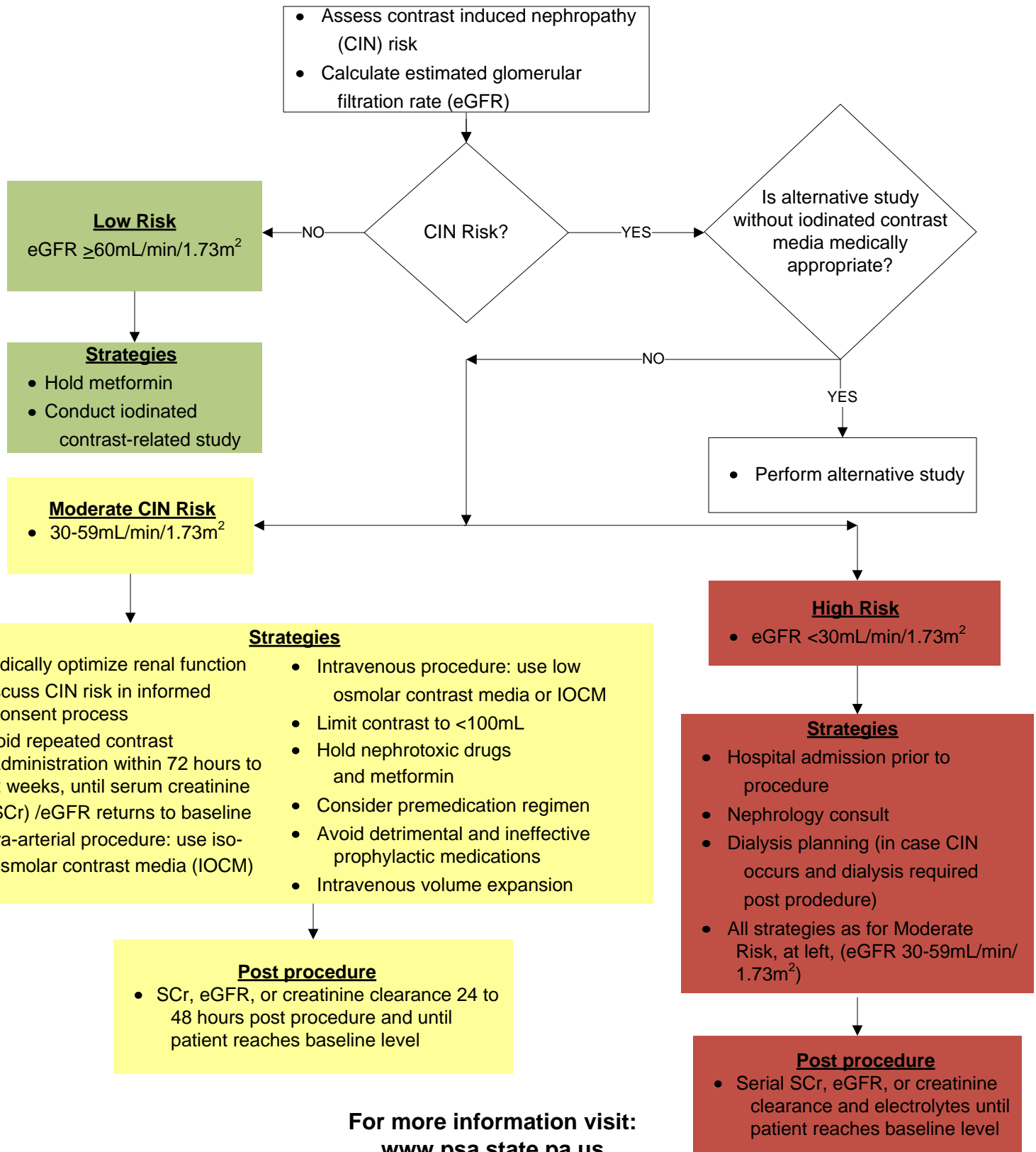


ALGORITHM

Management of Patients Undergoing Iodinated Contrast-related Procedures



For more information visit:
www.psa.state.pa.us

This algorithm was adapted from "Contrast-Induced Nephropathy: Can This Iatrogenic Complication of Iodinated Contrast be Prevented?" PA-PSRS Patient Safety Advisory. March 30, 2007. Vol. 4, Suppl. 1.