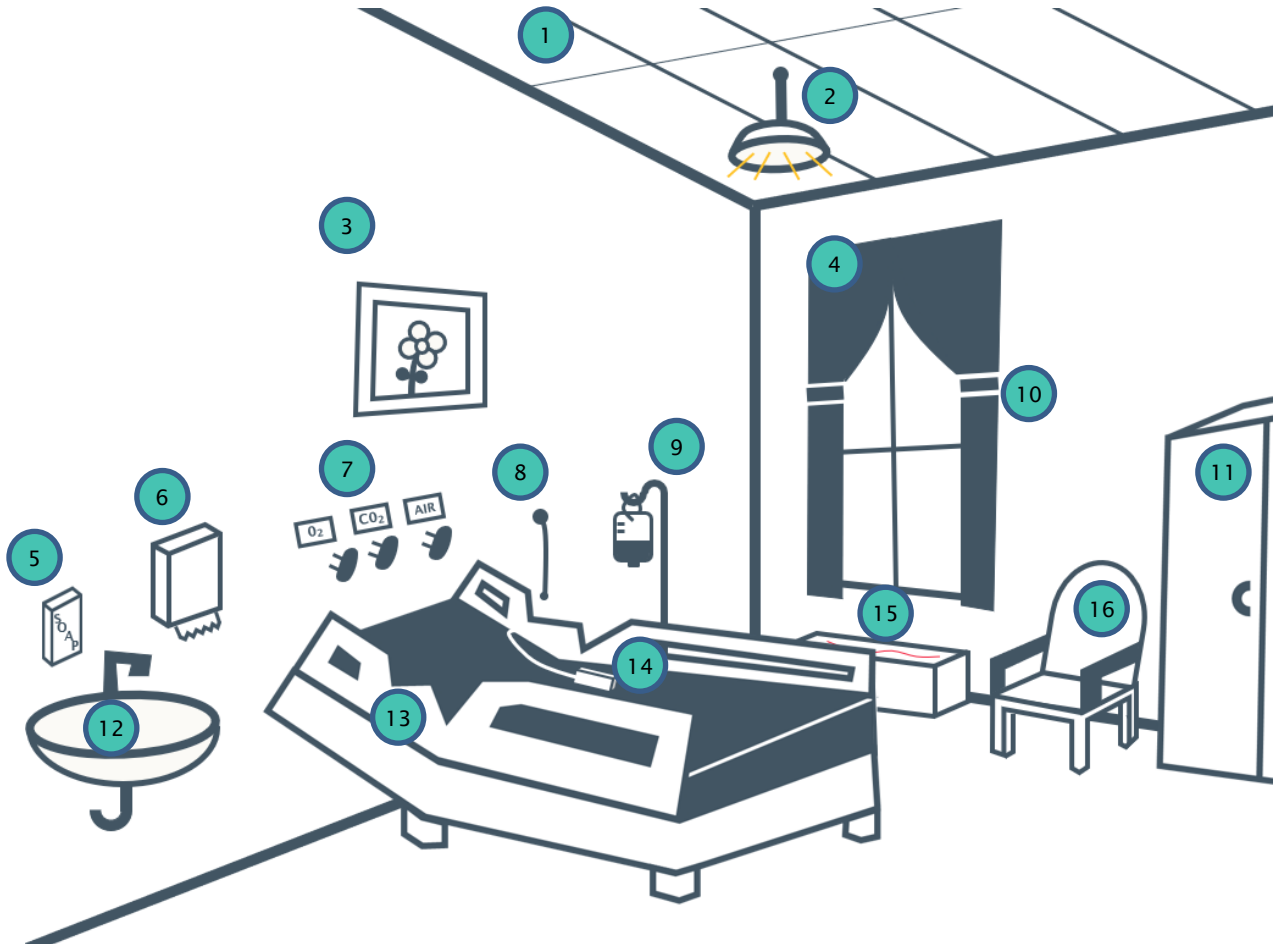


Ligature Risks in a Medical/Surgical Room



1	Drop ceiling / framing grid / piping/wiring above tiles
2	Non-recessed light fixture
3	Picture frame (should not have glass and be secured with tamper-resistant screws)
4	Drapes (also windowsill if there is one)
5	Soap dispenser / hand sanitizer (make sure not toxic)
6	Paper towel dispenser
7	Medical gas knobs and nozzles
8	Light cord
9	IV pole / hooks / unsecured tubing
10	Curtain tie-backs
11	Dresser – top, doors, handles
12	Sink / faucet / exposed plumbing
13	Bed rails
14	Call bell / remote
15	HVAC – unit itself / grill
16	Chair – back and armrests