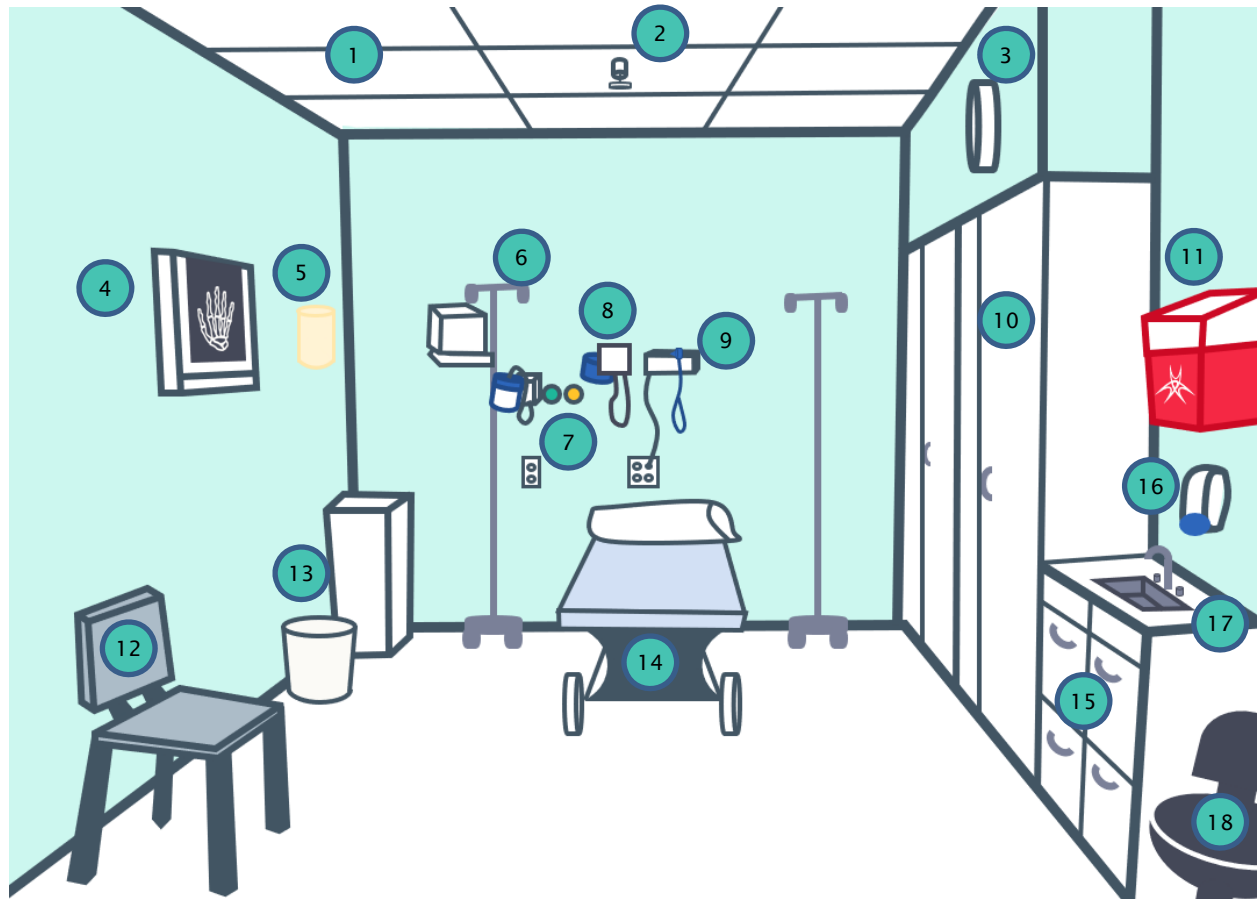


# Ligature Risks in an Emergency Department Room



1	Ceiling tiles
2	Sprinkler head
3	Clock
4	X-ray screen
5	Wall light
6	IV pole and pump
7	Medical gas valves and knobs
8	Blood pressure cuff
9	Behind-the-bed light and cords
10	Cabinet doors and handles
11	Sharps/biowaste container
12	Chair / chair back
13	Trashcan can be used as stepstool or anchor point depending on its weight
14	Stretcher mechanisms and wheels
15	Vanity drawers and handles
16	Hand soap dispenser
17	Sink faucet and knobs (also remember to check for access to plumbing below sink)
18	Stool