



**PSA** Patient Safety Authority

Safe Healthcare for All Patients

2017 Media Kit

## ABOUT THE PENNSYLVANIA PATIENT SAFETY AUTHORITY

The Authority, an independent state agency established under the Medical Care Availability and Reduction of Error (MCARE) Act of 2002, collects and analyzes data reported through its Pennsylvania Patient Safety Reporting System (PA-PSRS) and then provides strategies and lessons learned to healthcare facilities to improve safety and help prevent patient harm.

Learn more about the Authority at: <http://patientsafety.pa.gov>

### DATA ANALYSIS

Collecting and analyzing patient safety events and near misses is the cornerstone of the Authority's mission. Through the Pennsylvania Patient Safety Reporting System (PA-PSRS), the Authority collects, monitors, trends, and analyzes this data to identify opportunities for improvement, education, outreach, and research.

### COLLABORATIONS AND PARTNERSHIPS

Targeting specific clinical safety issues through focused collaborative efforts fosters rapid learning and spread of best practices, enables improvement locally and regionally, and enhances the outreach and connectedness of the patient safety community through peer support and encouragement.

### TRAINING AND EDUCATION

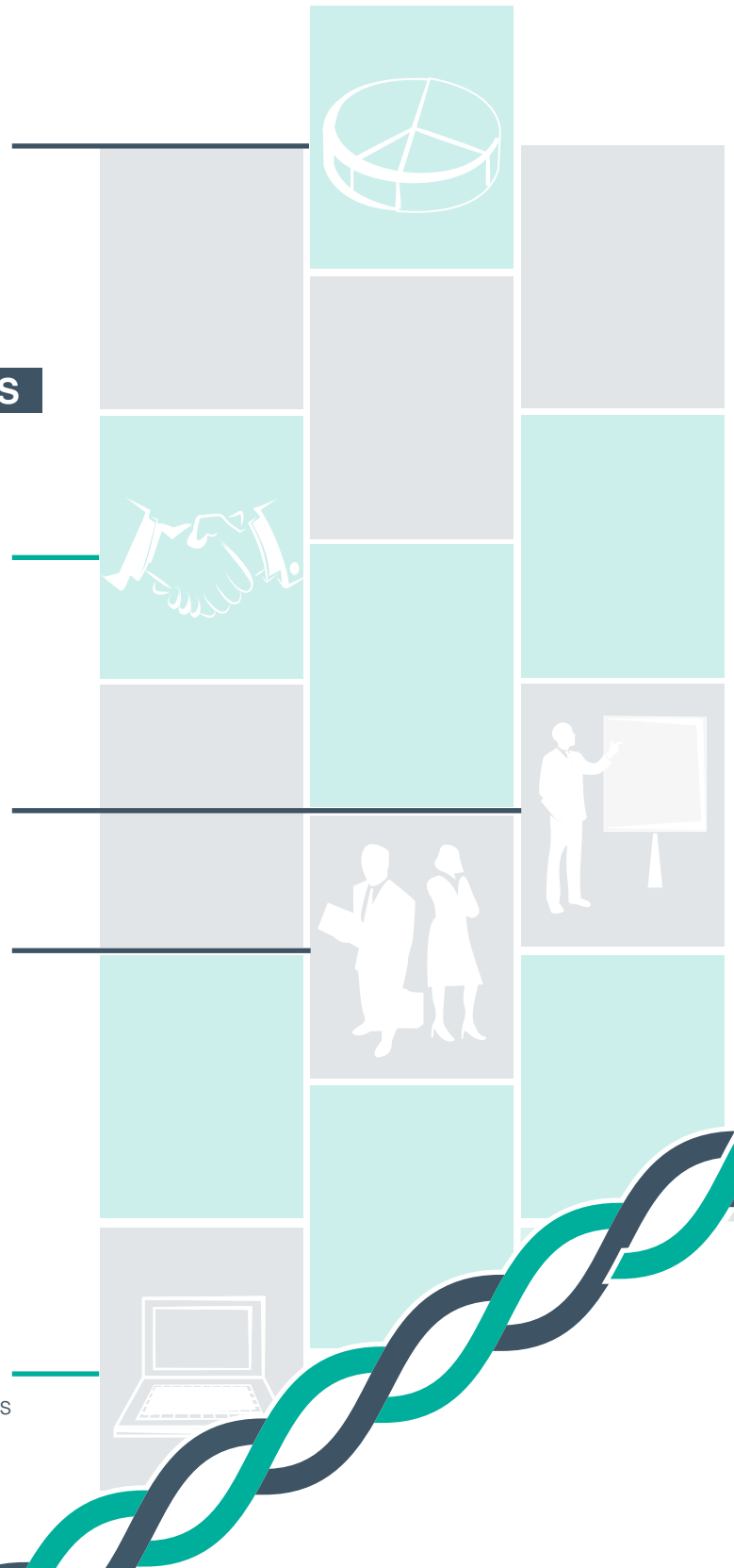
Training and educating healthcare providers in patient safety and improvement is crucial to the Authority's mission. Methods the Authority uses to disseminate new learning include webinars, conferences, and face-to-face interactions at facilities.

### PATIENT SAFETY LIAISONS & INFECTION PREVENTIONISTS

Providing hands-on assistance to the healthcare providers who carry out the patient safety work is a valuable feature of the Authority's mission. Patient Safety Liaisons and Infection Preventionists work directly with healthcare facility staff and afford them a personal contact with the Authority.

### PENNSYLVANIA PATIENT SAFETY ADVISORY AND AUTHORITY WEBSITE

Translating the vast amount of patient safety data into usable information for front-line healthcare providers is a valuable service of the Authority. Through its *Pennsylvania Patient Safety Advisory* journal and website, the Authority provides continual analysis and guidance on patient safety event trends and best practices.



# Strategic Plan 2017–2020

## VISION

Safe healthcare for all patients

### FOCUS ON EVALUATING THE REPORTING SYSTEM

Evaluate scope of patient safety events captured via PA-PSRS

Identify opportunities to improve data capture

### FOCUS ON LONG-TERM CARE

Identify key topics

Expand educational offerings

Lead an infection prevention collaborative

### FOCUS ON THE PATIENT

Expand inclusion of patient perspective

Identify key topics

Educate patients on safe healthcare

Improve awareness of and access to resources

### FOCUS ON IMPROVING DIAGNOSIS

Analyze internal and external data to identify trends

Update PA-PSRS to improve data capture

Lead an ED radiology collaborative

Expand educational offerings

Include focus on ambulatory clinics and practices

We will continue to provide these foundational services to support our current and future work

Pennsylvania Patient Safety Reporting System (PA-PSRS)

Toolkits

Data analysis

Advisories/ recommendations

Facility contact and consultation

Patient Safety Liaisons & Infection Preventionists

Online and live education

Website

Collaborative learning



**Patient  
Safety  
Authority**

## MISSION

Improve the quality of healthcare in Pennsylvania by collecting and analyzing patient safety information, developing solutions to patient safety issues, and sharing this information through education and collaboration.

## ADDITIONAL RESOURCES

[Governance](#)

[The Pennsylvania Patient Safety Advisory Library](#)

[Annual Reports](#)

[Press Releases](#)

**Media inquiries should be made to:**



Phone | (717) 346-0469

Fax | (717) 346-1090

E-mail | [patientsafetyauthority@pa.gov](mailto:patientsafetyauthority@pa.gov)

Website | <http://patientsafety.pa.gov>

Address

333 Market Street

Lobby Level

Harrisburg, PA 17101