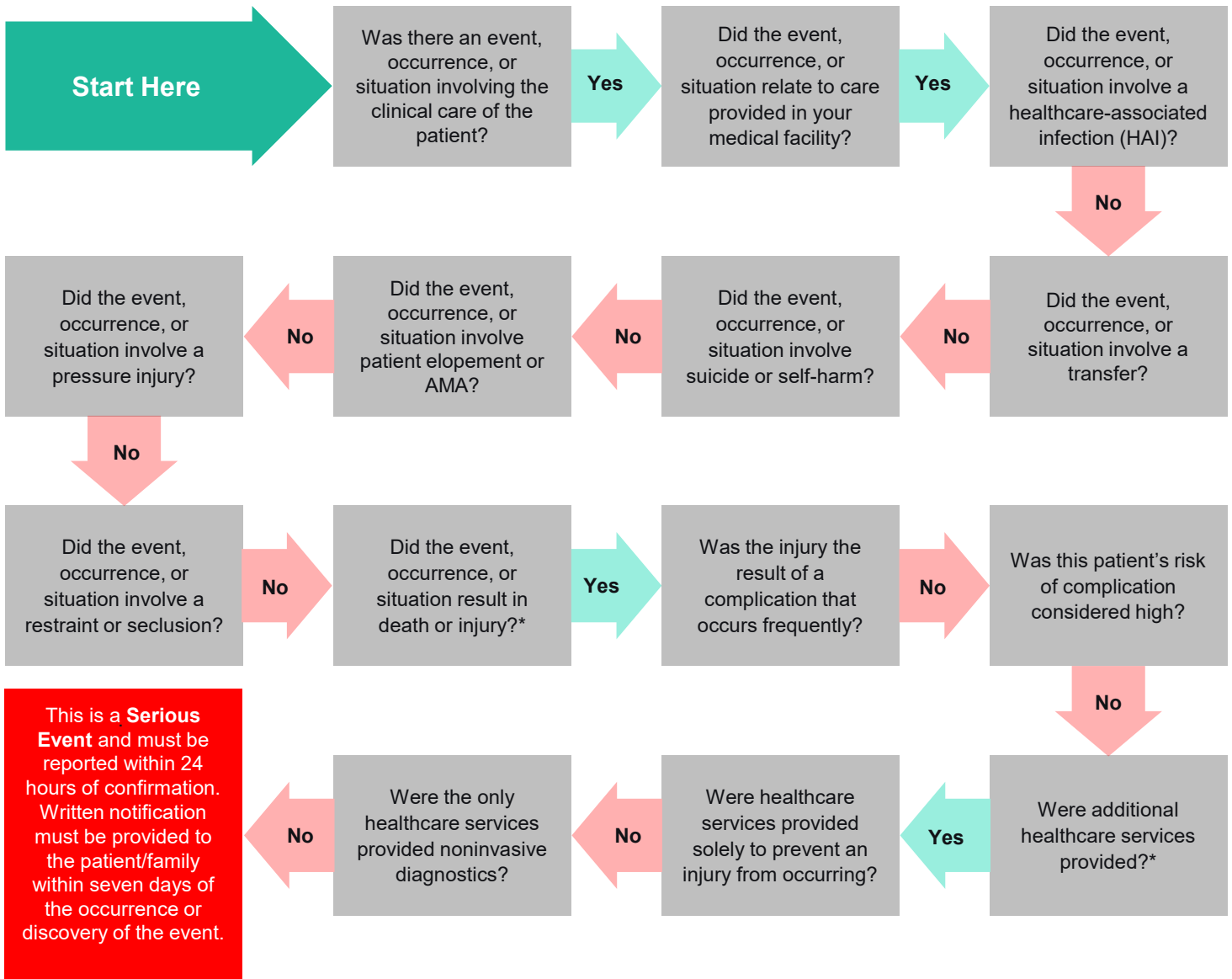


Wrong-Site Surgery-Interventional Radiology-Catheter Placement

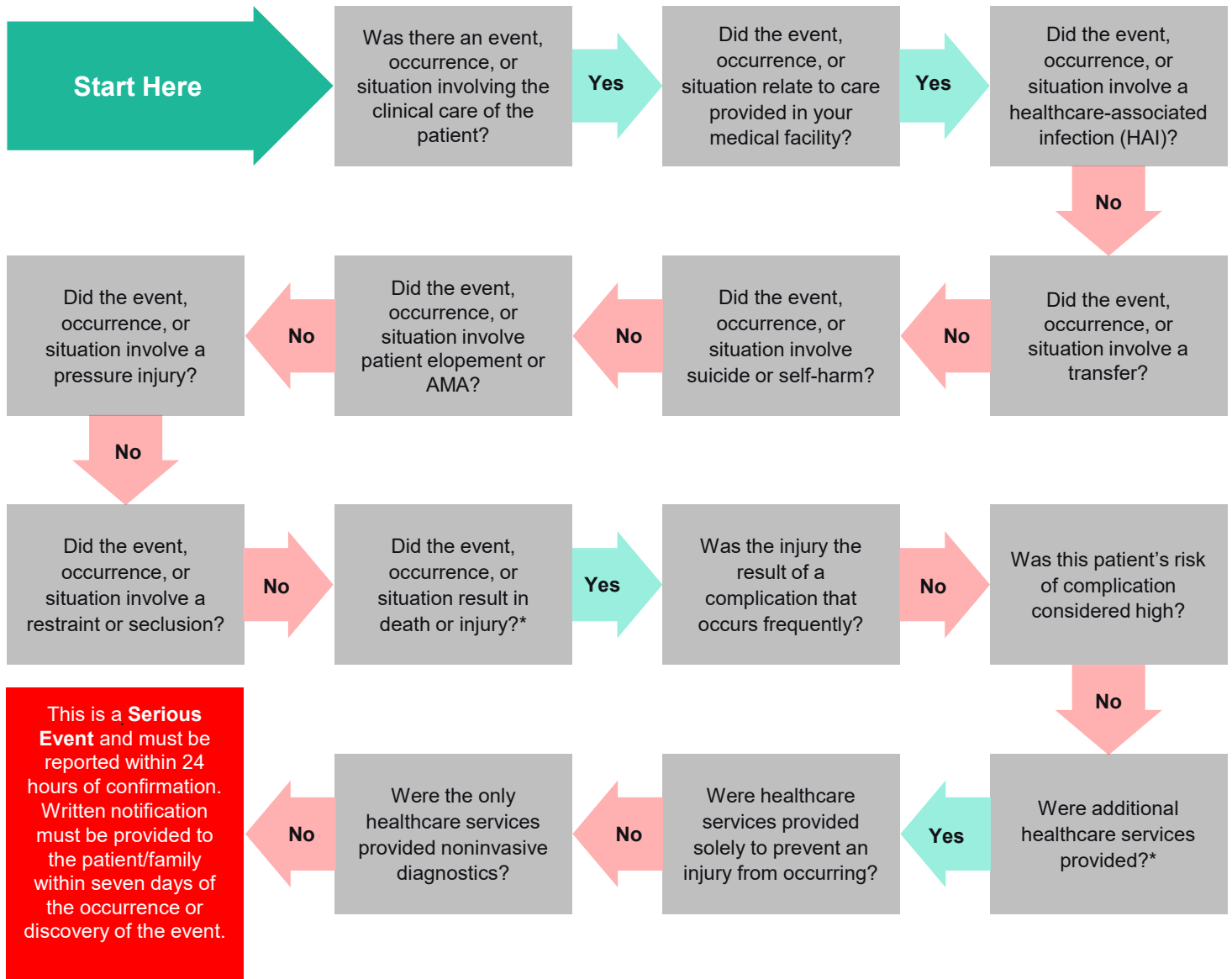
Narrative: A patient, who has poor venous access, needs a dual lumen PICC placed in interventional radiology (IR) due to an extensive chemotherapy schedule. The team performs the pre-procedure time-out, stating that a “catheter” is to be placed. Upon completion of the insertion, the patient is returned to the floor, it is recognized that the patient only has a single lumen catheter in place. The upcoming chemotherapy requires a double lumen access. The patient returns to IR where the correct catheter is placed.



* Any unnecessary invasive procedure or invasive procedure performed in error that carries risk for the patient constitutes an injury and performance of the correct or intended procedure then constitutes additional healthcare services. These occurrences are Serious Events. The wrong catheter is considered the injury and placement of the correct double lumen is the additional healthcare services.

Wrong-Site Surgery-Interventional Radiology

Narrative: A patient is scheduled for a left nephrostomy tube placement in interventional radiology (IR). The surgical site was marked in the pre-operative area per policy. A time-out was performed prior to starting the procedure, but the site mark was not referenced. Upon return to the inpatient unit, it is realized that the tube was placed on the wrong side requiring follow-up procedure for placement on the correct side.



* Any unnecessary invasive procedure or invasive procedure performed in error that carries risk for the patient constitutes an injury and performance of the correct or intended procedure then constitutes additional healthcare services. These occurrences are Serious Events. The nephrostomy tube placement on the incorrect side is considered the injury and subsequent surgical placement on the correct side is the additional healthcare services.